

Why Consider the Africentric Cohort

This program is for ANS students entering grade 10 who identify as African Descent. Candidates should have a solid understanding of mathematics from grade 9. Through the Africentric Cohort we aim to:

1. Increase the presence of ANS students in science, technology, and mathematics.
2. Focus on supporting ANS students with their written and oral expression.
3. Increase our student's self-awareness and self-confidence as learners through math and literacy.

Craig Campbell -Principal PAHS ccampbell@hrce.ca 902-435-8452 ext. 4101001

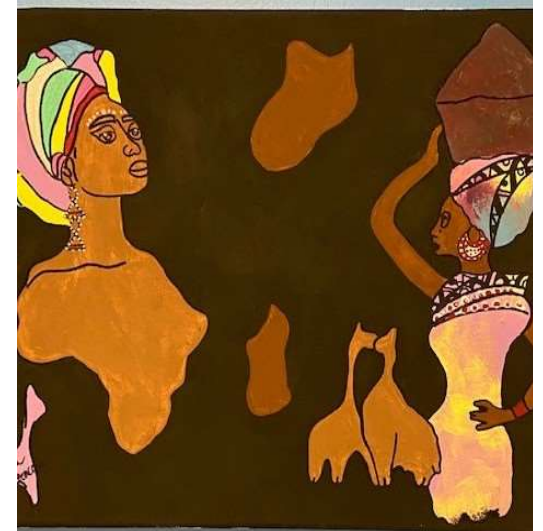
Danita Williams-School Counsellor PAHS Danita.williams@hrce.ca 902-435-8452 ext. 4101007

“If the rhythm of the drum beat changes, the dance step must adapt.”



WHS Africentric Cohort 2023-24

Woodlawn High School is proud to offer an Africentric Cohort for African Nova Scotia Learners



How do I Register?

Students who are interested should speak to their school counsellor who will provide a registration form.

About the Cohort

Information about Africa, continental Africans, and people of African descent in the Diaspora is often absent from the curriculum in our schools, burdened with historical inaccuracies, and/or not told by the African Canadians themselves but by others. What it means to be African Canadian is a question central to the teaching and learning practices throughout this cohort. There will be 2 courses offered for the grade 10 cohort.

Math 10 for learners of African Canadian Ancestry will run every day for the 2023-24 school year. English 10 For African Canadian learners will run every second day for the 2022-23 school year.

"We are not makers of history
we are made by history."

-Dr. Martin Luther King Jr.

One of WHS's greatest strengths is its diverse student population. Data shows ANS students are underrepresented in higher level math courses. To address this WHS is offering its own Africentric Cohort for the 2023-24 school year. This cohort places ANS students in the center of their learning and encourages them to enroll in future academic courses.

Math 10 for Africentric Cohort:

This course is an Africentric academic high school course in which teachers use the cultural characteristics, lived experiences and perspectives of ANS students as a means to teach and assess them equitably and with rigor. This course will be supplemented with hands on community-based learning partners.

Other courses offered

- English 10 for African Nova Scotia Learners

Students who register for the cohort will be encouraged to continue their academic studies through high school in Grade 11 and 12 courses designed for African Nova Scotia Learners.

Our Learning Partners:

- Auburn High School Africentric Cohort
- Dalhousie University
- Imhotep's Legacy Academy
- HRCE

Contact Us

Craig Campbell -Principal PAHS
ccampbell@hrce.ca 902-435-8452
ext. 4101001

Danita Williams
danita.williams@hrce.ca
School Counsellor PAHS -
902-435-8452 ext. 4101007